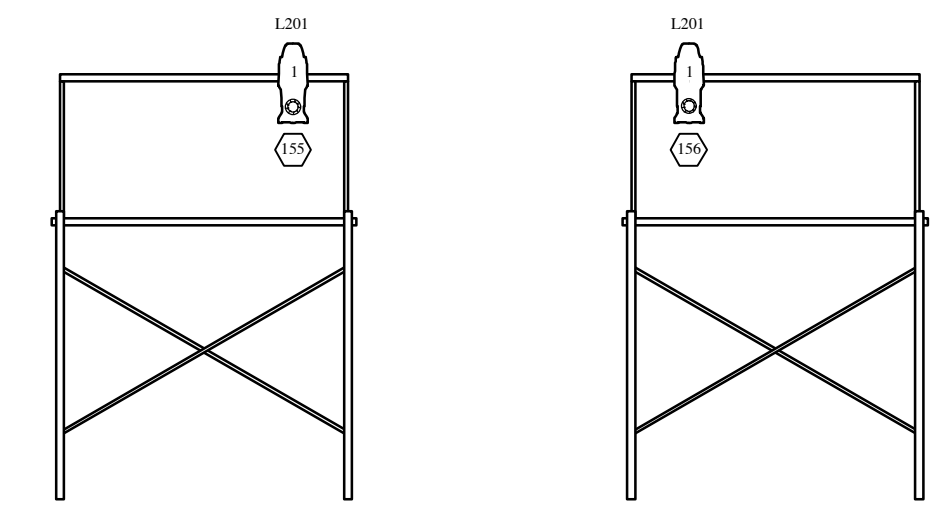
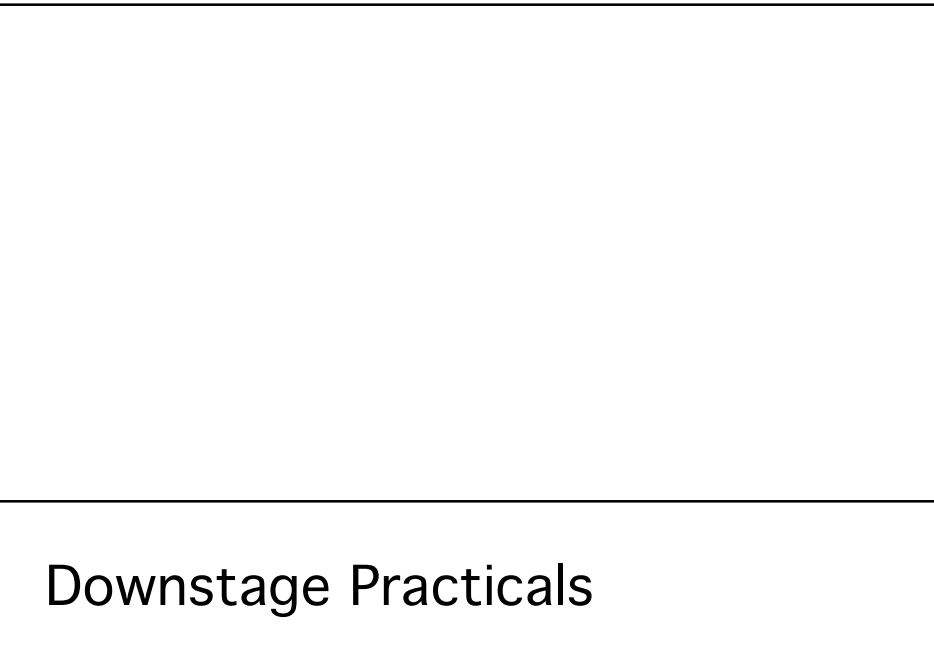


### Set Mounts and Practicals

#### Scaffolding



Need 2 circuits for SL and SR On Stage Follow Spots.



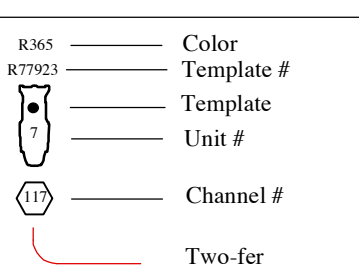
Downstage Practicals  
1 circuit in Orchestra Pit for 5 under stage uplights.



#### KEY

Quantity	Fixture Type
1	Source 4 10 deg. HPL 575W
22	Source 4 19 deg. HPL 575W
28	Source 4 26 deg. HPL 575W
34	Source 4 36 deg. HPL 575W
18	Source 4 50 deg. HPL 575W
2	Altman 6x12, 750W
2	Source 4 PAR NSP, HPL 575W
16	Source 4 PAR MFL, HPL 575W
12	Source 4 PAR WFL, HPL 575W
24	Altman 6" Fresnel
6	3-cell Cyc
3	3-ckt Ministrip, 3x750w
4	High End Technobeam
16	Morpheus M-Fader
3	Barndoor

#### TYPICAL



#### NOTES

1. Instruments default to 18" centers, except where indicated.
2. Additional twofering may be suggested by LD as necessary.
3. Electric trim heights shall be set visually by lighting designer.
4. Please provide at least 1 extra circuit on all overstage positions (if possible).
5. Lighting positions may be shown out of scale for clarity.
6. R=Rosco, G=GAM, L=Lee, A=Apollo

This Drawing Represents Design Intent and Concept. All specific fixtures herein relate solely to the appearance of the lighting and not to matters of electrical or structural soundness and/or safety. The designer is not qualified to assess the electrical or structural appropriateness of the design. If any specific fixtures are found to be incompatible with proper safety precautions, the designer shall make prompt modifications to the specific fixtures in question.

children's musical theater san jose  
Montgomery Theatre  
San Jose, CA

# EVITA

Directed by: Ian Leonard  
Scenic Design by: Jim Culley  
LIGHTING DESIGN: Andrew J. Hungerford

DRAWN BY: CSB, AH

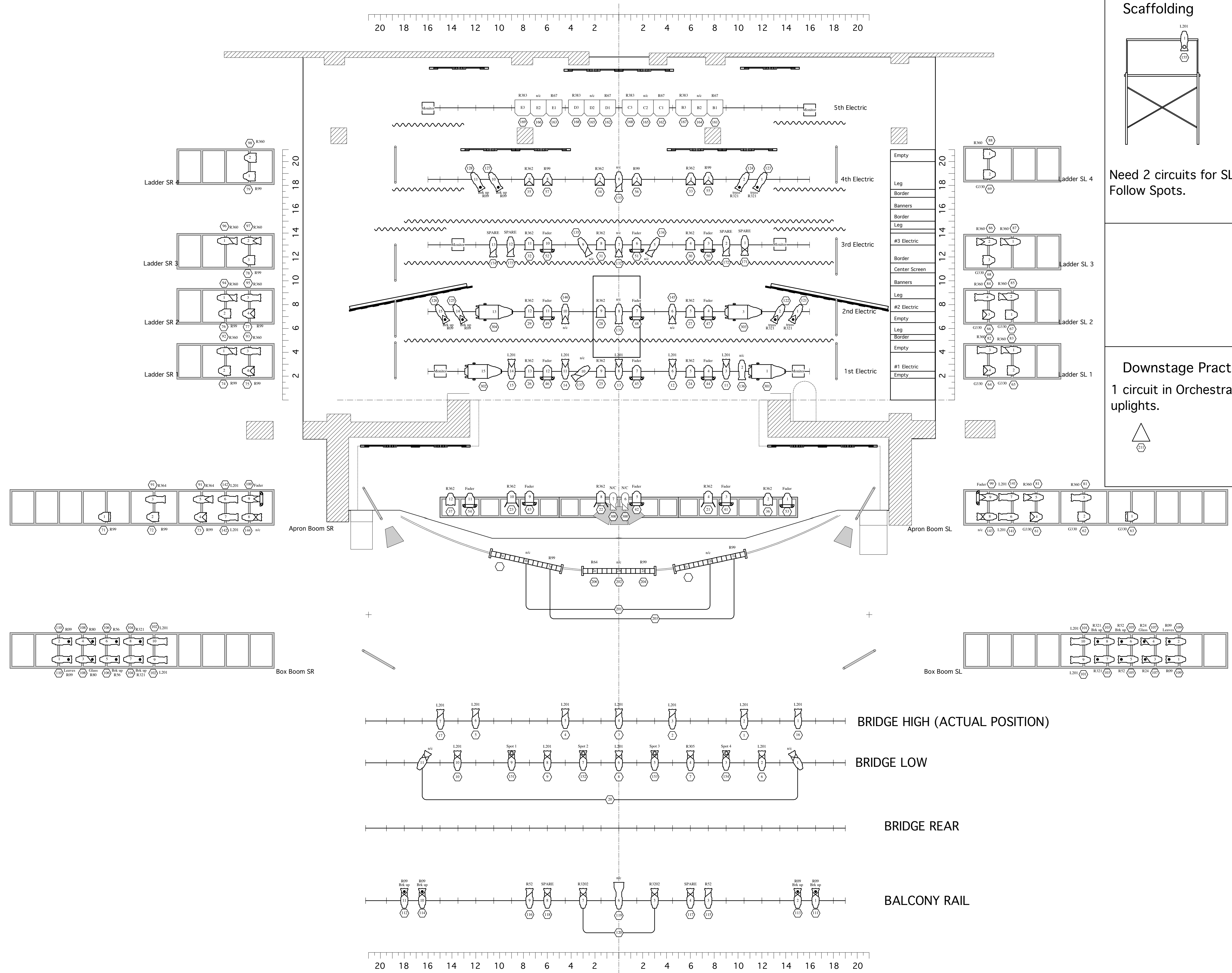
### Light Plot

Load-In Version  
3/4/07

FILE NAME:  
Evita\_3\_4\_07.mcd

PLATE #  
**1**  
OF 1

SCALE: 1/4" = 1'-0"



BRIDGE HIGH (ACTUAL POSITION)

BRIDGE LOW

BRIDGE REAR

BALCONY RAIL

20 18 16 14 12 10 8 6 4 2 2 4 6 8 10 12 14 16 18 20

20 18 16 14 12 10 8 6 4 2 2 4 6 8 10 12 14 16 18 20